

Call for proposals: Window Gallery at SPACE

Call for proposals: Window gallery at SPACE

SPACE Gallery is seeking proposals from artists across all media as part of the 2020 programming for our window gallery.

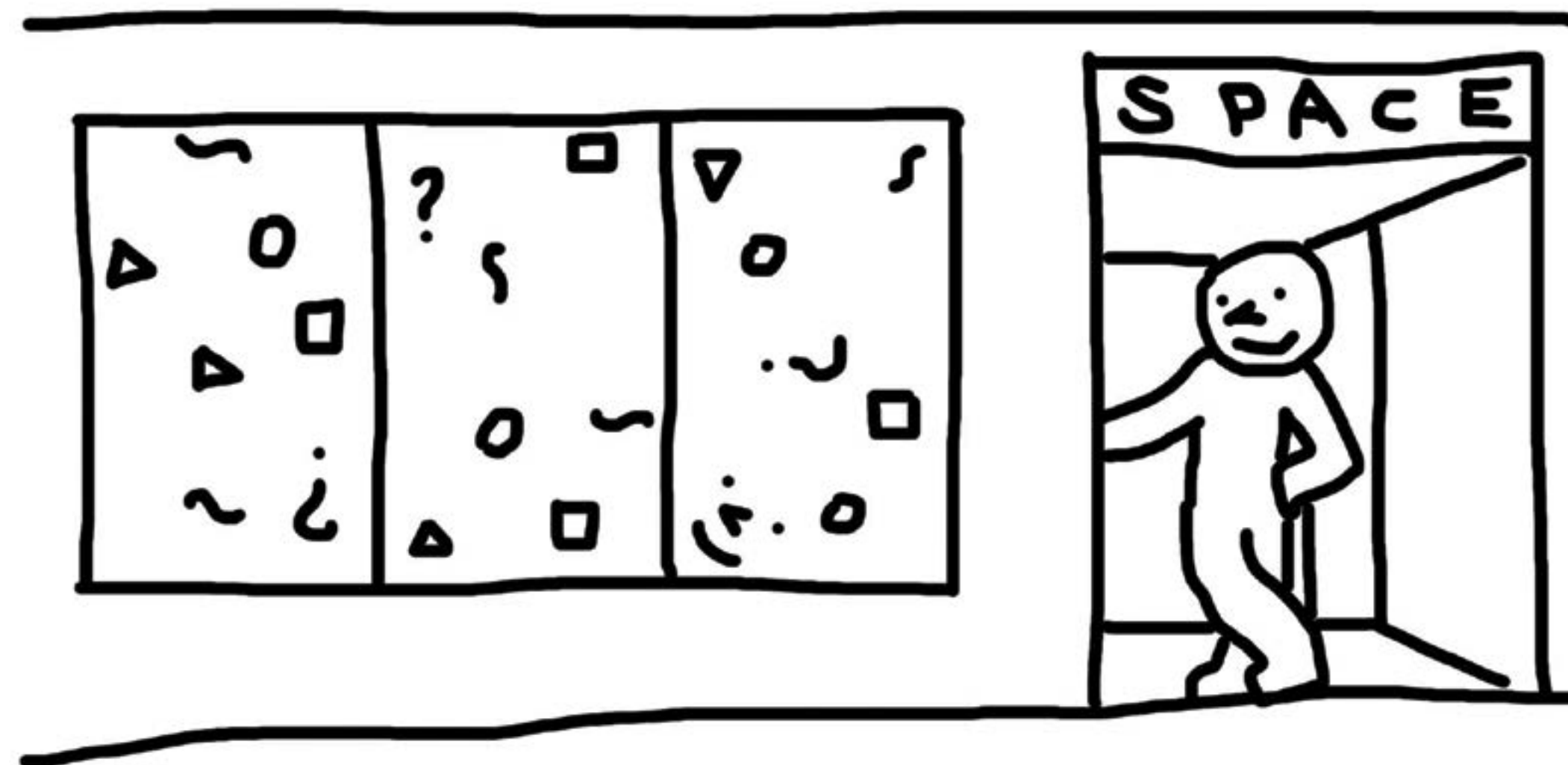
The window gallery is located in the heart of Portland's Arts District on Congress Street with plenty of foot traffic year round. Exhibitions in the window gallery engage with the dynamic crowds that occupy Portland during different times of the day.

We invite projects that utilize the full space of the gallery and public-facing aspects of its location. Projects should acknowledge the window gallery in the context of its surroundings: weather conditions, time of day, traffic and adjacent events will influence the public's experience with your project. Work of all disciplines will be considered, but projects that respond to the unique spatial conditions and engage the streetscape are traditionally the most successful. Artists are encouraged to consider the varying site changes that occur within a 24 hour period such as glare, sunlight and pedestrian perspectives.

Projects we have supported include — but are not limited to — installations, sculptures, and new media works. We will consider all kinds projects that engage the space and effectively address the unique qualities of SPACE's Window Gallery.

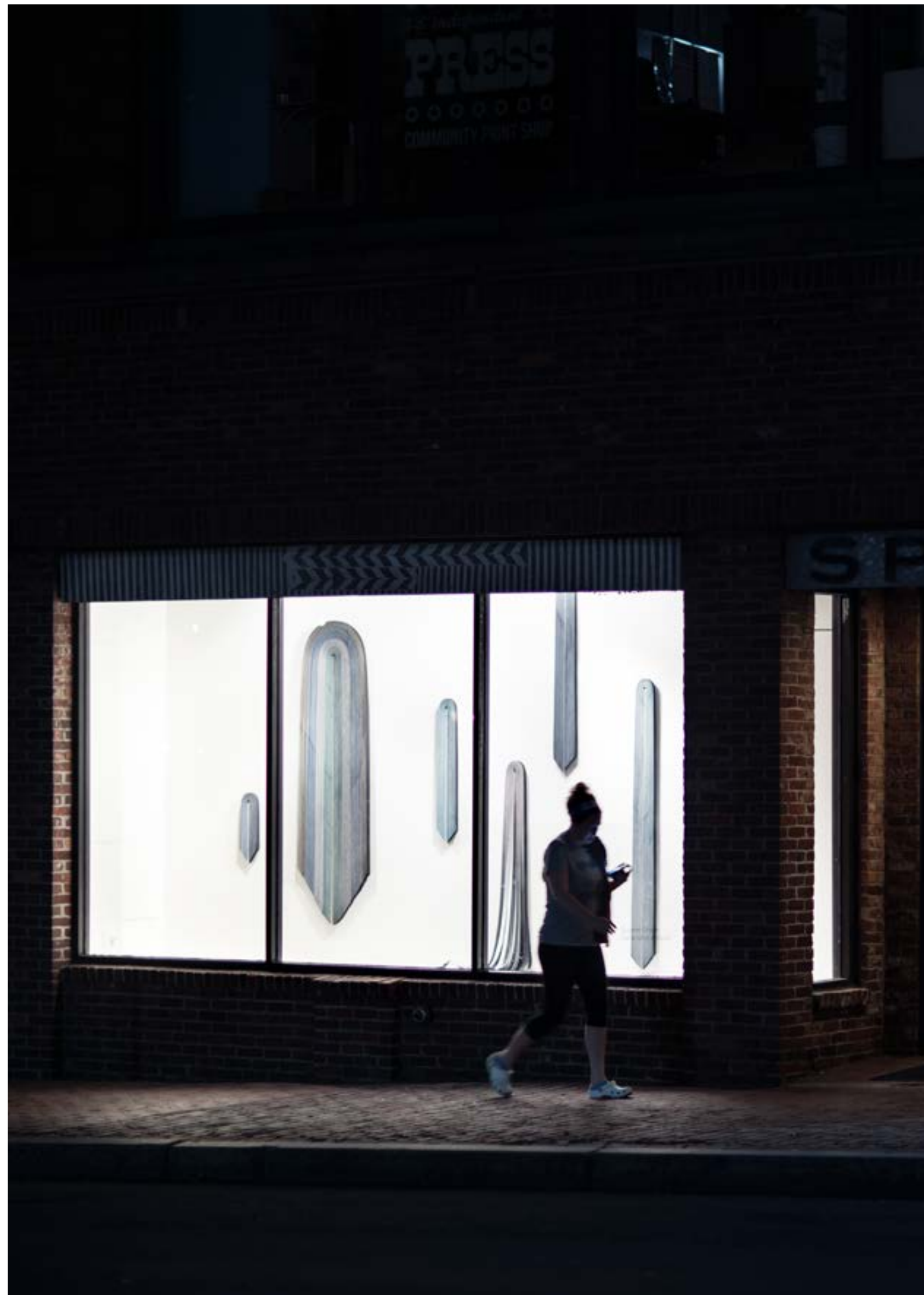
Artists will receive a modest stipend which is intended to cover all costs associated with carrying out the project (e.g. shipping, transportation, materials, production etc.). In addition, SPACE will provide preparatory staff, volunteers, and professional documentation of the completed work.

We will accept proposals through January 15, 2020. Reviews begin immediately after the deadline, and accepted proposals are expected to be completed between April and December 2020.



Selected exhibitions showcase

Surabhi Ghosh
Garlanding & Guise (2017)



Photography by Joel Tsui

Noah Breuer
Bohemian Showroom (2018)



Photography by Joel Tsui

Justin Levesque

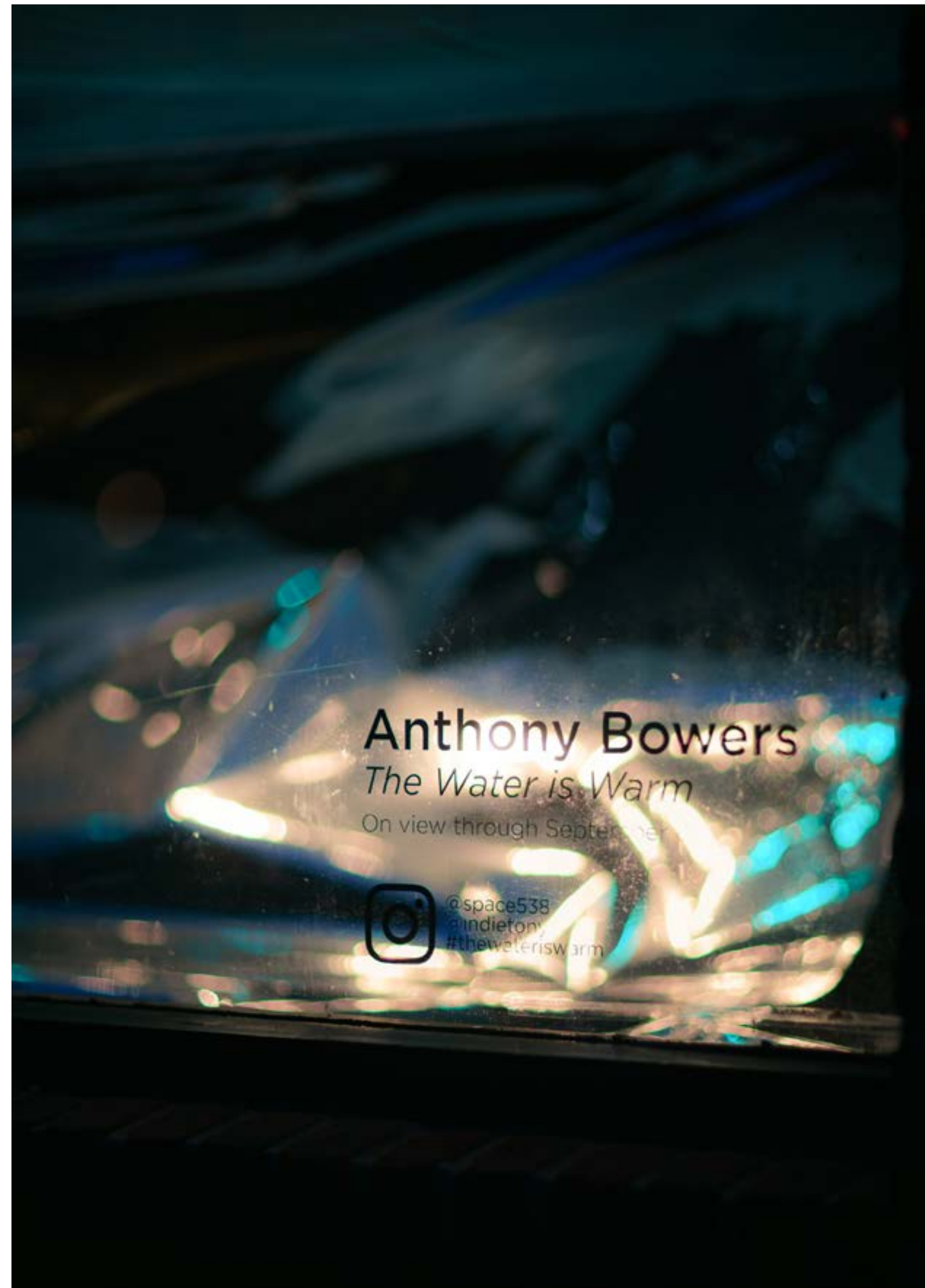
The Friction Coefficient of Ice Against Various Materials (2018)



Photography by Joel Tsui

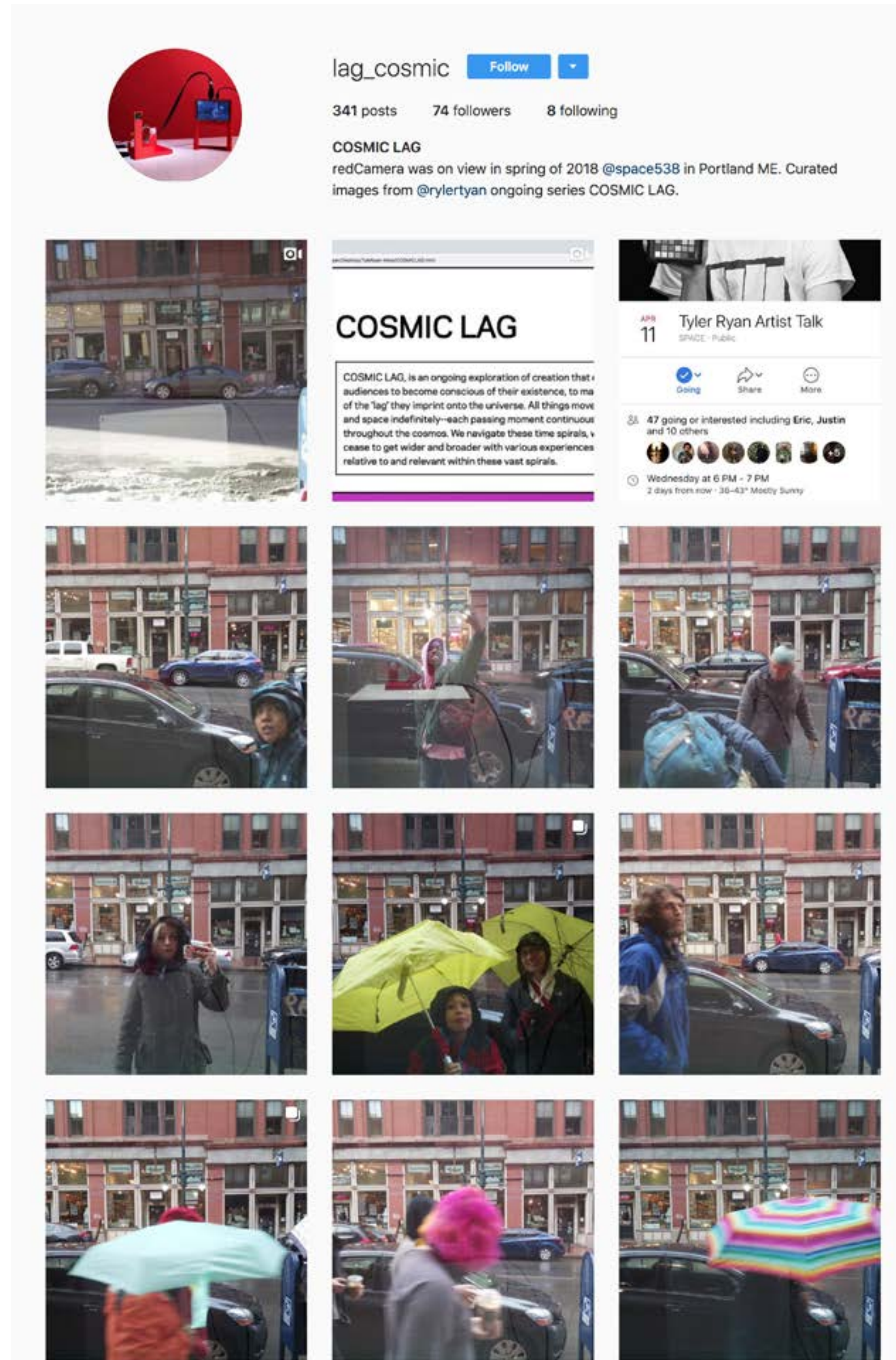
Anthony Bowers

The Water is Warm (2018)



Photography by Joel Tsui

Tyler Ryan *Cosmic Lag (Ongoing) (2018)*



Screenshot of *Cosmic Lag* Instagram account



Photography by Joel Tsui

Julie K. Gray
Waiting Room (2018)



Photography by the artist

Eli Sobel

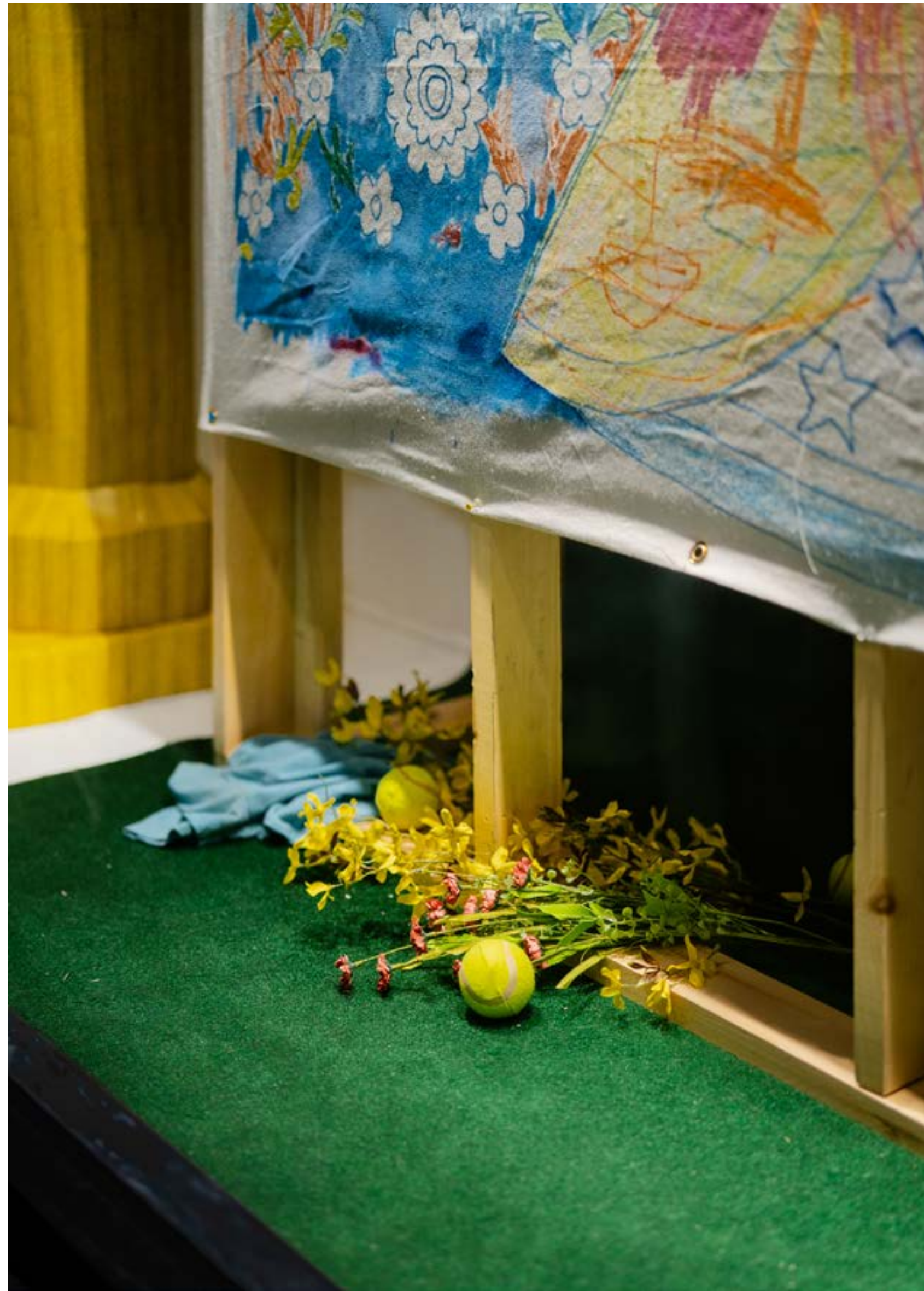
The Anatomy Lesson (2019)



Photography by Justin Levesque

SPACE

Brendan Shea
<3 <3 <3 (2019)



Photography by Joel Tsui

jumatatu m. poe & Donte Beacham
Let 'im Move You: Installation (2019)

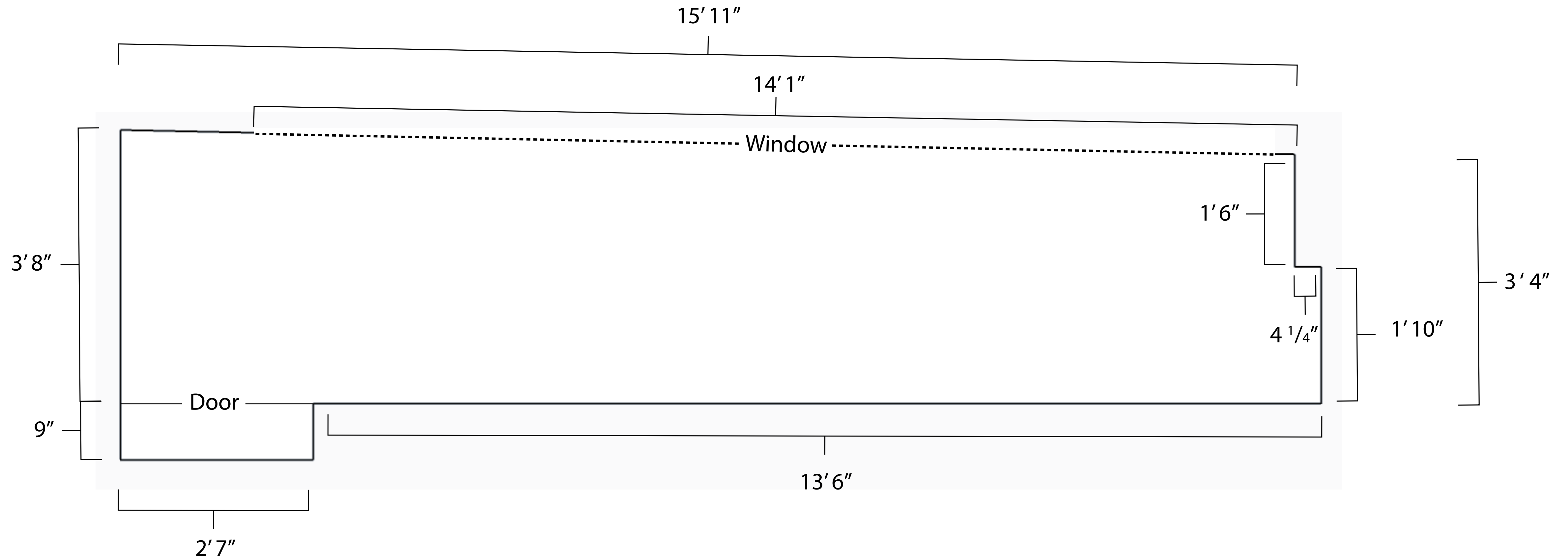


Photography by Joel Tsui

Floor plan, specifications, and other information

Floor plan — Window Gallery

All measurements refer to the interior of the Window Gallery



Height information:

Overall window gallery – 110"

Top of window from floor: 86"

Other specifications and information

The window gallery is equipped with track lighting. Auxiliary lighting solutions are available at the artist's expense.

For installations that require power, there is a four-outlet receptacle located at the narrow end of the gallery. If needed, you can add or relocate outlets with extension cords and power strips, which can be requested from SPACE on a case-by-case basis.

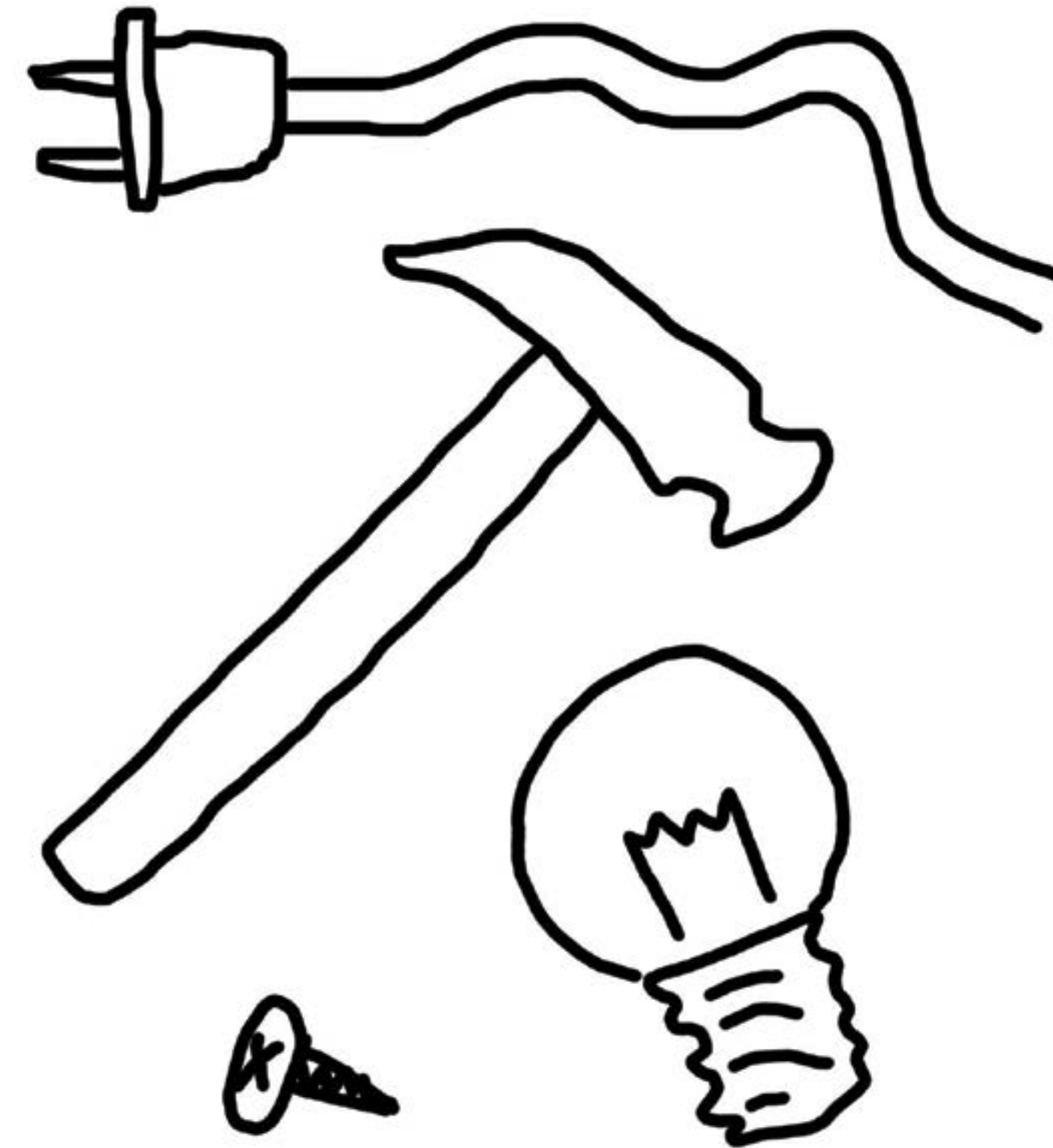
Depending on existing programs and events, we have additional hardware (monitors, media players, etc.) available for loan. These will be considered on a case-by-case basis.

You will have access to our tool room, which has installation hardware, ladders, power tools, and more.

You will also have access to preparatory staff and volunteers upon request.

Please include all your installation needs in the proposal to ensure we can provide you the equipment needed. Applicants are responsible for the cost of paint if the gallery is to be painted a color other than white, which needs on average a gallon and a quart for two coats. Please use Behr interior flat paint that can be purchased at any Home Depot.

Completed projects must closely resemble the proposal submitted.



Out-of-bounds

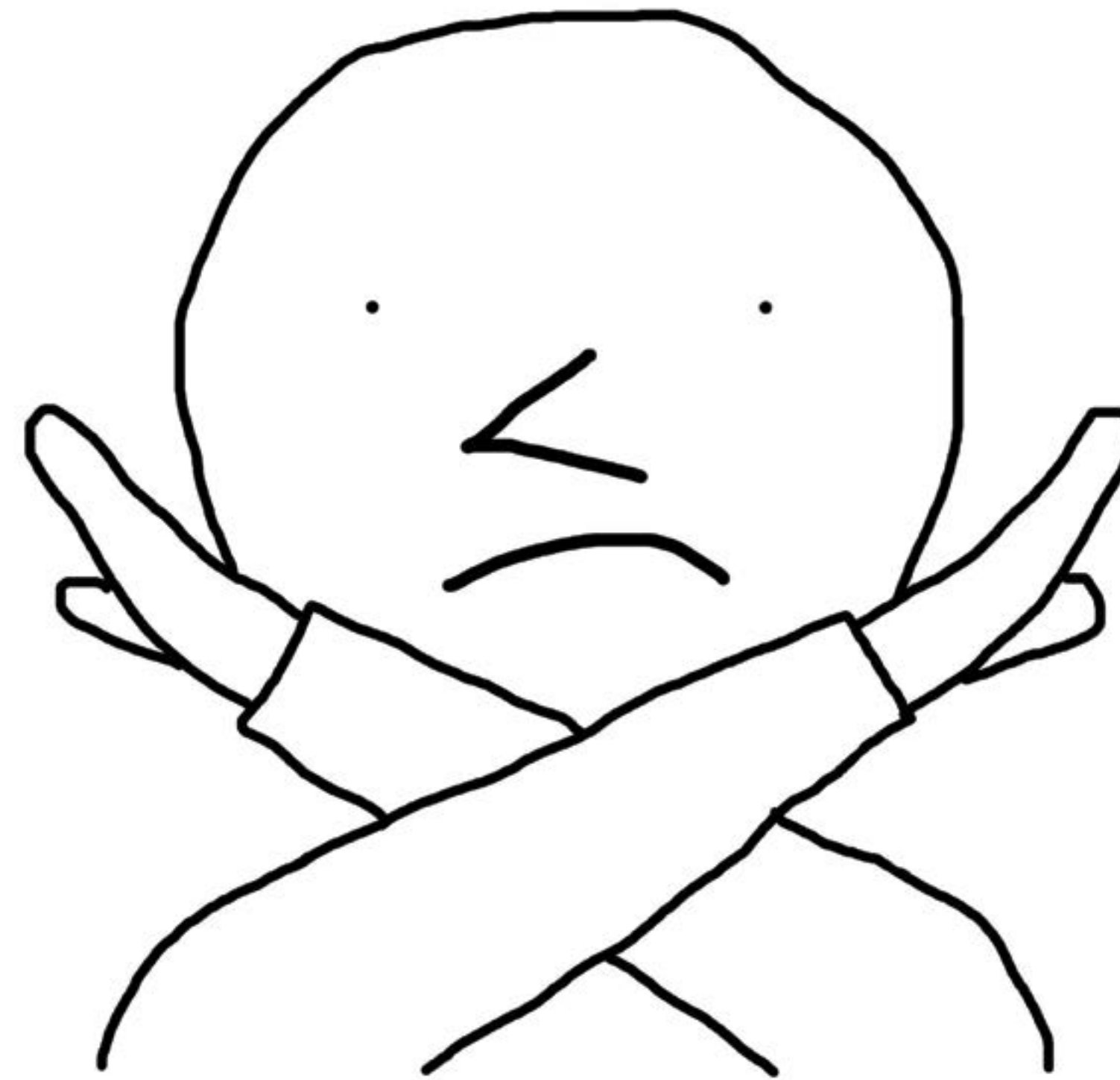
Your project should be entirely encapsulated within the Window Gallery, which means you cannot have work installed from the public side of the window, or extend work into SPACE Gallery's event space. This includes all soundworks.

In addition, you may not tamper with the dimensions of the Gallery, such as cutting on or through the gallery walls and glass, but you are welcome to build structures within the space that could alter the way it is perceived from a pedestrian standpoint.

The use of adhesive materials should be kept to a minimum. If you will need to use adhesives for your installation, you will be responsible for removing all residue. Please include details of materials used in your proposal.

The use of permanent markers, permanent inks, oil paints and spray paint are strictly prohibited.

In accordance with city noise ordinances, no sound may project into the public passageway surrounding the window gallery.



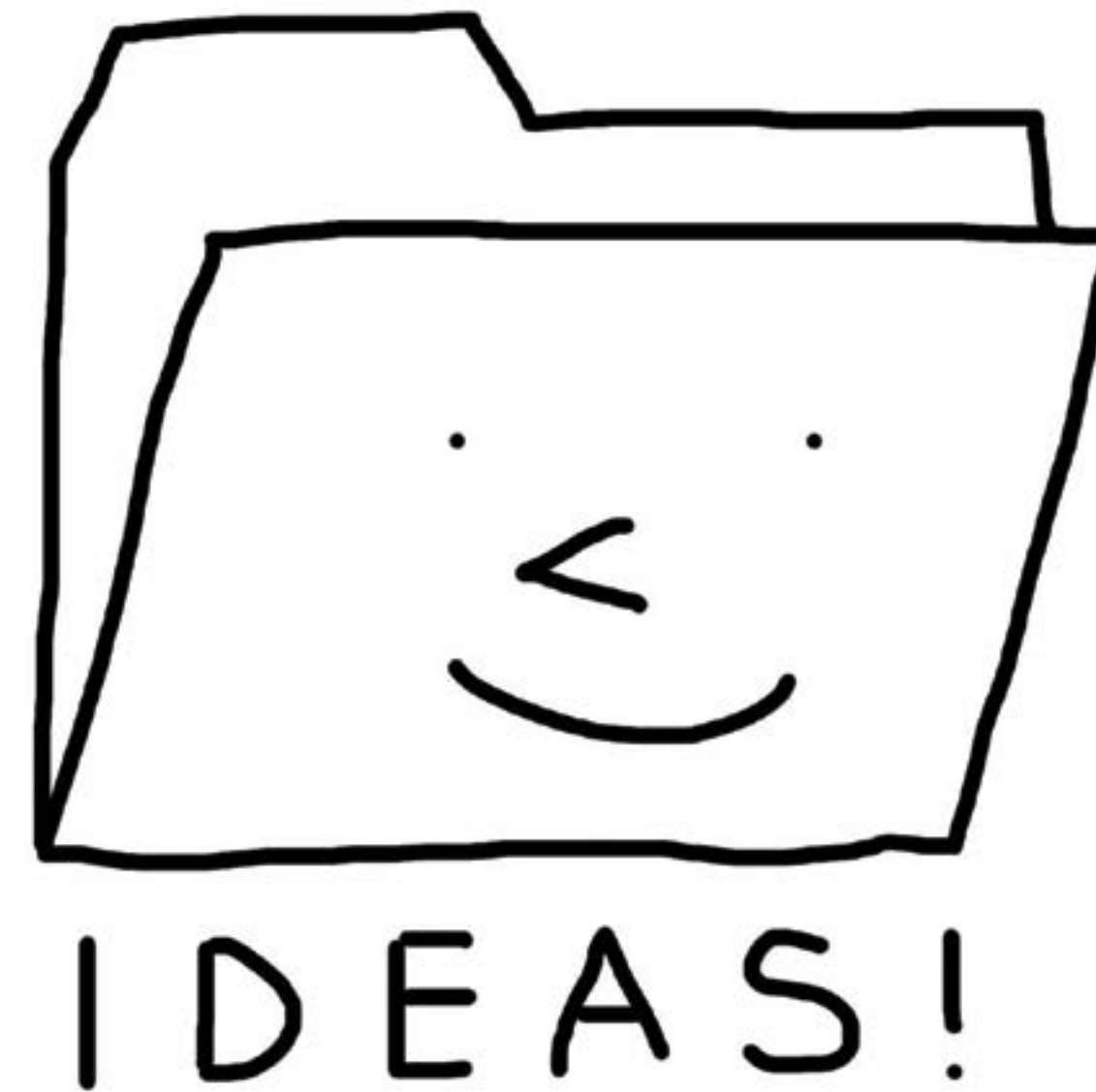
How to apply

To submit your proposal, you must use the Submittable form linked in our website and bottom of this page. We do not accept walk-ins or email submissions.

Your proposal should include:

1. Personal information
so we can contact you!
2. Submission overview
so we know what you're doing!
3. Artist statement
so we can promote you!
4. Dates
so we know when we'll see you!
5. Attached files
help us visualize your idea!
6. Works list
we are curious people!
7. CV
*we are **very** curious people!*

Click here to go to the Submittable form.



Questions?
hello@space538.com
207.828.5600